



Digital Speedometer

IS0354
Rev. A ecn 9032 09/2013

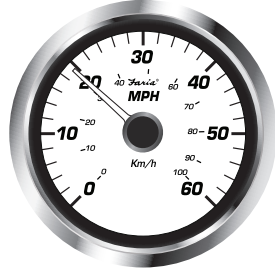
Quick Reference Card

Your Digital Speedometer is not a Stand-Alone instrument. You must connect the Speedometer to an MG3000 Tachometer for normal operations. Refer to the Tachometer Owner's Manual.

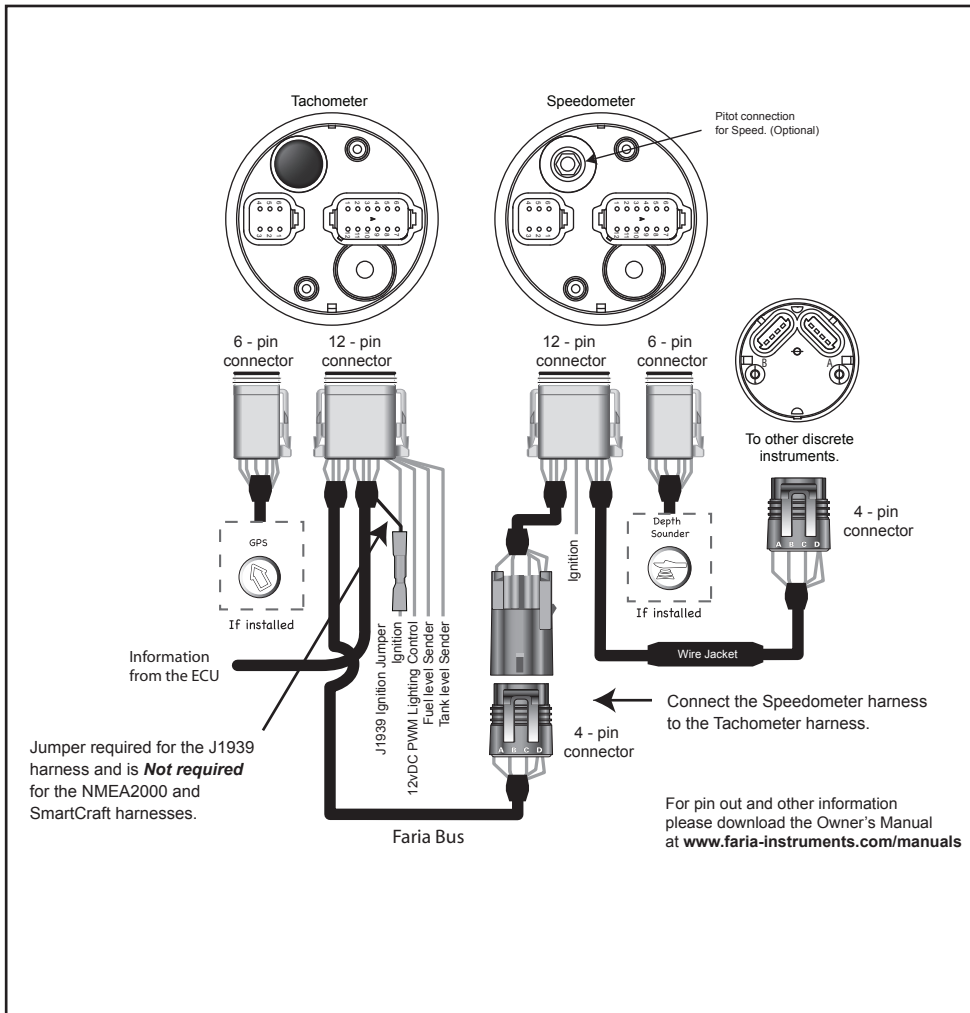
You can download the Tachometer Owner's Manual at;

www.faria-instruments.com/manuals

Note: Some functions may not be present in your version of the MG3000 program. Engine and Boat manufactures have the ability to customize the program to fit their build requirements. If you are looking for a feature listed in the Appendix and your MG does not show the function required please consult your Engine and Boat manufacturer's User manual.



Wiring



Digital Speedometer

IS0354
Rev. A ecn 9032 09/2013

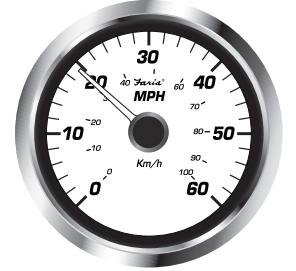
Quick Reference Card

Your Digital Speedometer is not a Stand-Alone instrument. You must connect the Speedometer to an MG3000 Tachometer for normal operations. Refer to the Tachometer Owner's Manual.

You can download the Tachometer Owner's Manual at;

www.faria-instruments.com/manuals

Note: Some functions may not be present in your version of the MG3000 program. Engine and Boat manufactures have the ability to customize the program to fit their build requirements. If you are looking for a feature listed in the Appendix and your MG does not show the function required please consult your Engine and Boat manufacturer's User manual.



Wiring

